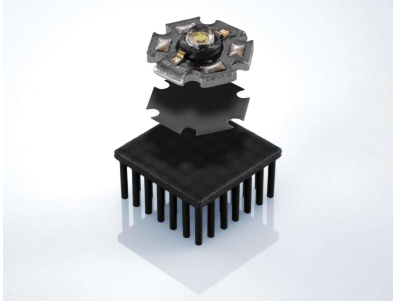


Thermal Interface Material



GTS 12



GES GRAPHITE

- Graphite film
- Natural material

Applications

- Chipsets
- LED
- Automotive
- Appliances
- Heat spreader applications

Options

- Available with adhesive film

Properties	Unit	GTS 12
Color		Graphite
Thermal Properties		
Thermal Conductivity (z axis)	W/mK	7-12
Thermal Conductivity (xy plane)	W/mK	1,000-1,800
Electrical Properties		
Breakdown Voltage $U_{d; ac}$	kV	Conductive
Mechanical Properties		
Hardness	Shore	85
Carbon Content	%	99.5-99.9
Thickness	mm (inch)	0.012 (0.0005)
Physical Properties		
Application Temperature	°C (°F)	-40 to +400 (-40 to +752)
Density	g/cm ³	1.5-1.6
Flame rating	UL-94	V-0
Specific Heat	J/kg °C	710
CTE (z axis)	1/K	-0.4 ppm
CTE (xy plane)	1/K	27 ppm

The data provide engineering guidance, performance in actual applications should be established through testing.