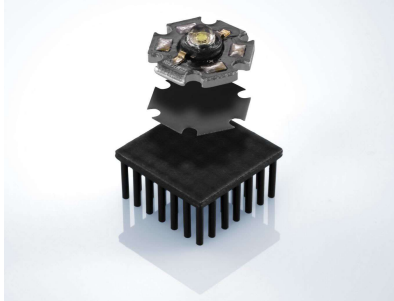


Thermal Interface Material



GTS 1000i



GES GRAPHITE

- Graphite film
- Natural material
- Dual plastic layer provides electrical insulation

Applications

- Chipsets
- LED
- Power Supplies
- Automotive
- Appliances

Options

- Available with adhesive film

Properties	Unit	GTS 1000
Color		Graphite
Thermal Properties of Graphite		
Thermal Conductivity (z axis)	W/mK	3-5
Thermal Conductivity (xy plane)	W/mK	300-400
Electrical Properties		
Breakdown Voltage $U_{d; ac}$	kV	3.6
Dielectric Breakdown $E_{d; ac}$	kV/mm	3
Mechanical Properties		
Hardness	Shore	85
Carbon Content	%	99.0-99.5
Thickness	mm (inch)	1.0 (0.04)
Physical Properties		
Application Temperature	°C (°F)	-40 to +140 (-40 to +284)
Density	g/cm ³	1.0-1.2
Specific Heat	J/kg °C	710
CTE (z axis)	1/K	-0.4 ppm
CTE (xy plane)	1/K	27 ppm

The data provide engineering guidance, performance in actual applications should be established through testing.