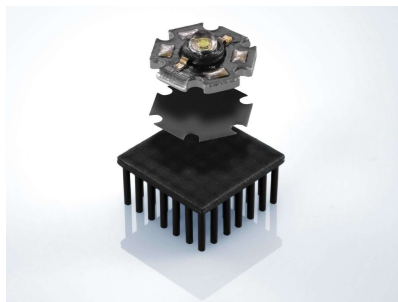


# Thermal Interface Material



## GTS 1000



**GES GRAPHITE**

- Graphite film
- Natural material

Properties	Unit	GTS 1000
Color		Graphite
<b>Thermal Properties</b>		
Thermal Conductivity (z axis)	W/mK	3-5
Thermal Conductivity (xy plane)	W/mK	300-400
<b>Electrical Properties</b>		
Breakdown Voltage $U_{d; ac}$	kV	Conductive
<b>Mechanical Properties</b>		
Hardness	Shore	85
Carbon Content	%	99.0-99.5
Thickness	mm (inch)	1.0 (0.04)
<b>Physical Properties</b>		
Application Temperature	°C (°F)	-40 to +400 (-40 to +752)
Density	g/cm <sup>3</sup>	1.0-1.2
Flame rating	UL-94	V-0
Specific Heat	J/kg °C	710
CTE (z axis)	1/K	-0.4 ppm
CTE (xy plane)	1/K	27 ppm

### Applications

- Chipsets
- LED
- Automotive
- Appliances
- Heat spreader applications

### Options

- Available with adhesive film

The data provide engineering guidance, performance in actual applications should be established through testing.